

REV.	ECN. NO.	APPD.
A	WL-20-008	Jerry. Zhang

### 技术参数

绝缘体:PBT 热塑性塑料

触头材质:铜合金材料 镀金

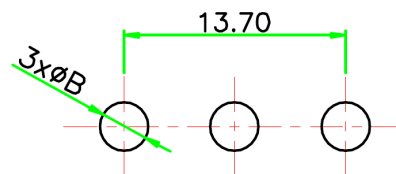
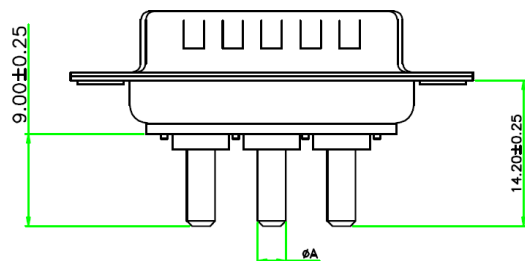
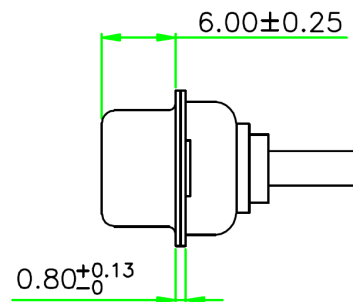
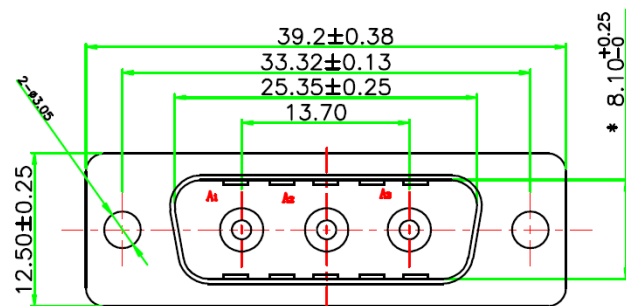
接触电阻:2.7 毫欧姆 (最大)

绝缘电阻:2000 兆欧姆 (最小)

额定温度:-55℃ ~ +1250℃

电流额定值:20A

工作电压:300V



PCB LAYOUT

X.±	X.±	UNITS	mm	NAME(INTENDED USE)				
.X± 0.3	.X'±	MAT'L		3W3 公 电流直焊板式传统铆合 端子外露9cm				
.XX± 0.20	.XX'±	SEE NOTES		PART NO.(INTENDED USE)	CLASS: <input type="checkbox"/> CONFIDENTIAL <input type="checkbox"/> SECRET <input checked="" type="checkbox"/> GENERAL			
.XXX±	.XXX'±	FINISH		WL11-0401	TITLE: CONN DRAWING			
<small>THESE DRAWINGS AND SPECIFICATIONS ARE THE PROPERTY OF INCEL INTERCONNECT TECHNOLOGY LIMITED, AND SHALL NOT BE REPRODUCED, COPIED OR USED IN ANY MANNER WITHOUT THE PRIOR WRITTEN CONSENT OF INCEL INTERCONNECT TECHNOLOGY LIMITED.</small>				APPD: yuan. wu 08/16"20	DWG NO.: WL11-0401-1950			
				Q'TY	CHKD: lei. wang 08/16"20	SCALE	SHEET	REV.
					DRAW: min. sun 08/16"20	N/A	1/1	A