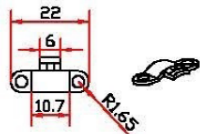
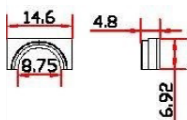
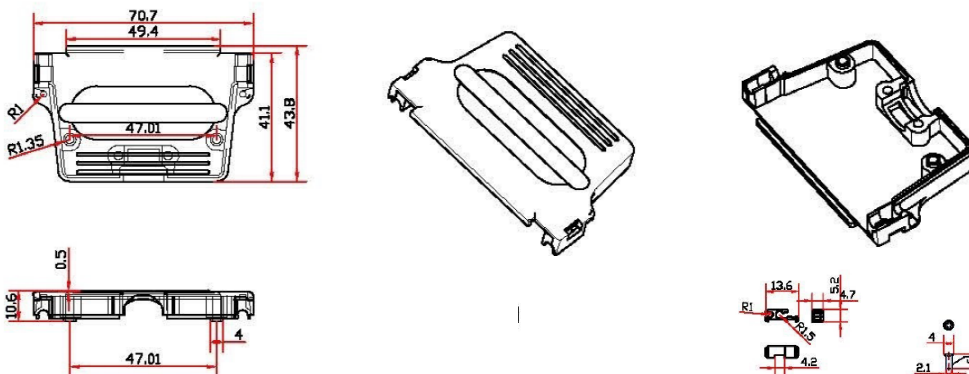
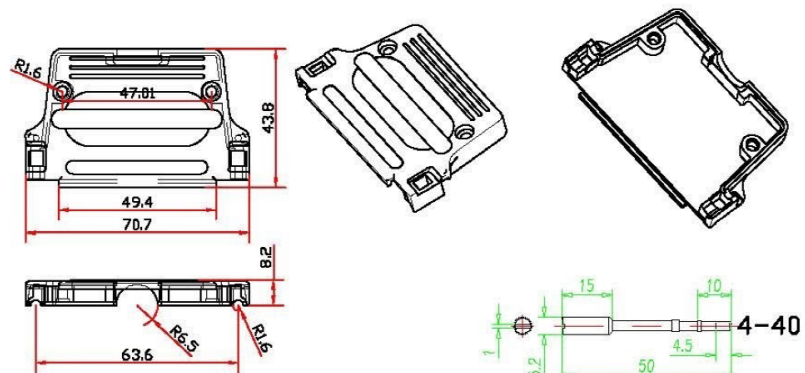
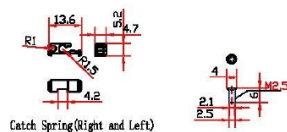


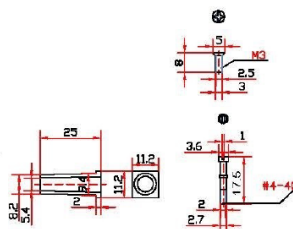
REV.	ECN. NO.	APPD.
A	IN-19-006	TOM. CHEN



Cable Clamp


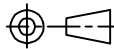


Catch Spring(Right and Left)



装配 (附件如下)

项目	名称	数量	材质
1	Hoods(Lid and base)	1SET	Zinc Alloy
2	Screws For Hood	2PCS	Iron
3	Screw For Clamp	2PCS	Iron
4	Locking Screw	2PCS	Iron
5	Cable Clamp	1PCS	Zinc Alloy
6	Catch Spring(Right and Left)	2PCS	ABS
7	Cable Reduction Plate	2PCS	Zinc Alloy

X.±	X.*±	UNITS	mm	NAME(INTENDED USE)	
.X± 0.3	.X*±	MAT'L		D-Sub 37Pin 180度金属壳 短螺杆	
.XX± 0.20	.XX*±	SEE NOTES		PART NO.(INTENDED USE)	CLASS: <input type="checkbox"/> CONFIDENTIAL <input type="checkbox"/> SECRET <input checked="" type="checkbox"/> GENERAL
.XXX±	.XXX*±	FINISH		WL23-5701	TITLE: CONN DRAWING
THESE DRAWINGS AND SPECIFICATIONS ARE THE PROPERTY OF INCEL INTERCONNECT TECHNOLOGY LIMITED, AND SHALL NOT BE REPRODUCED, COPIED OR USED IN ANY MANNER WITHOUT THE PRIOR WRITTEN CONSENT OF INCEL INTERCONNECT TECHNOLOGY LIMITED.				APPD: yuan. wu 09/16~10	DWG NO.: WL23-5701-0022
				CHKD: Zhang hui 09/16~10	
				DRAW: min. sun 09/16~10	